

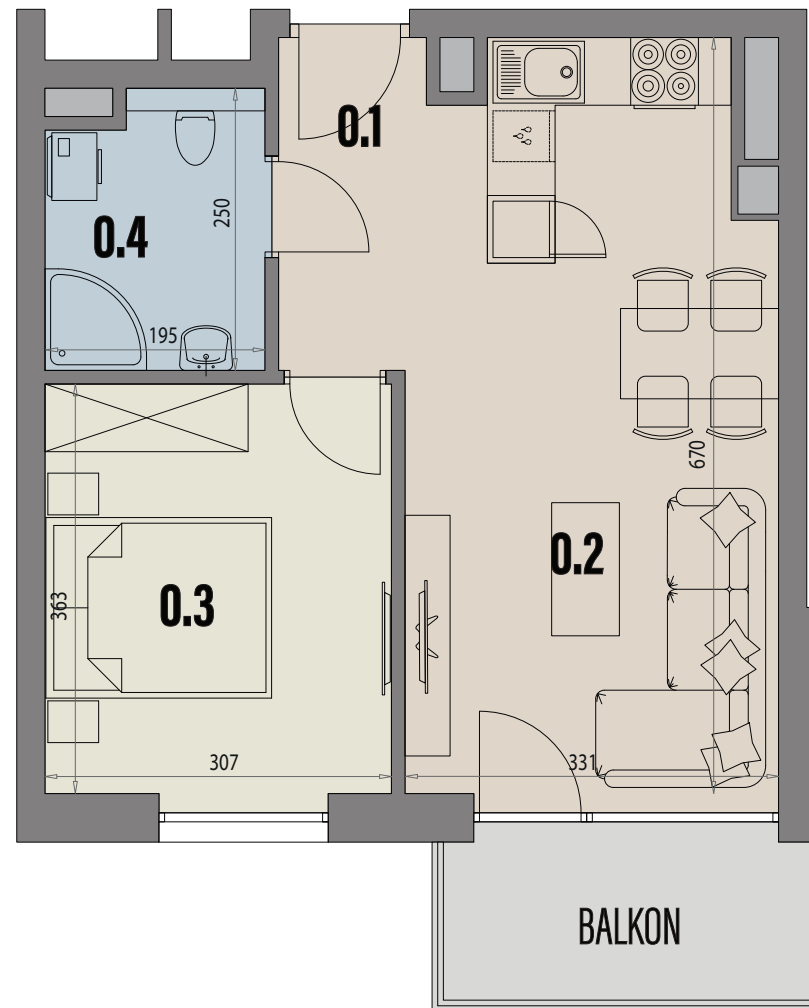
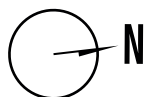
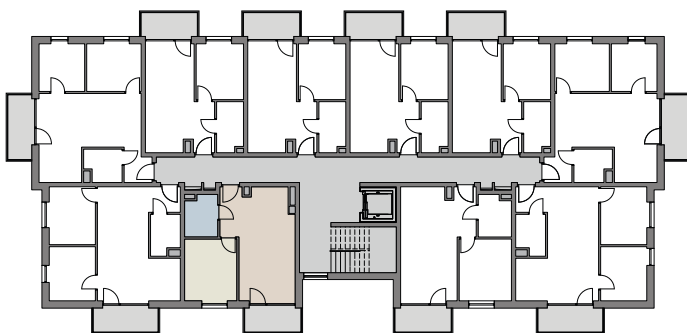
OGRODY SOHO

G
BUDYNEK

09
LOKAL **1**
PIĘTRO

39,77m²
POWIERZCHNIA UŻYTKOWA

5,25m²
POWIERZCHNIA BALKONU



| | | |
|------------|-----------------------|----------------------|
| 0.1 | PRZEDPOKÓJ | 3,38 m ² |
| 0.2 | SALON Z ANEKSEM KUCH. | 20,86 m ² |
| 0.3 | POKÓJ | 11,01 m ² |
| 0.4 | ŁAZIENKA | 4,52 m ² |