

OGRODY SOHO

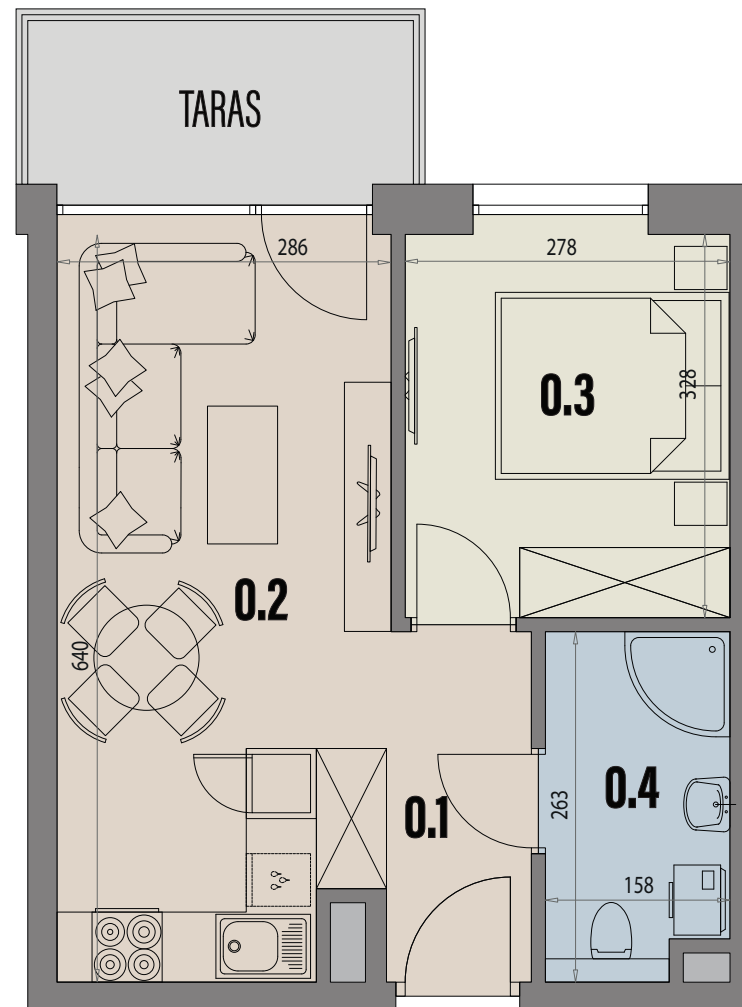
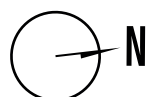
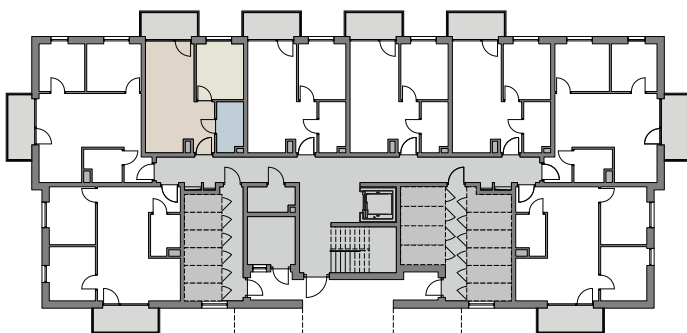
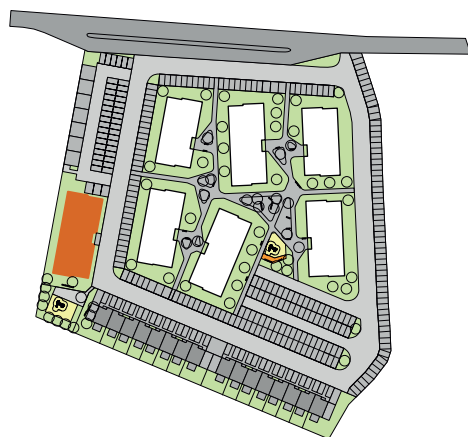
G
BUDYNEK

03
LOKAL

0
PIĘTRO

34,71m²
POWIERZCHNIA UŻYTKOWA

5,25m²
POWIERZCHNIA TARASU



0.1	PRZEDPOKÓJ	3,64 m ²
0.2	SALON Z ANEKSEM KUCH.	17,61 m ²
0.3	POKÓJ	9,00 m ²
0.4	ŁAZIENKA	4,46 m ²