

# OGRODY SOHO

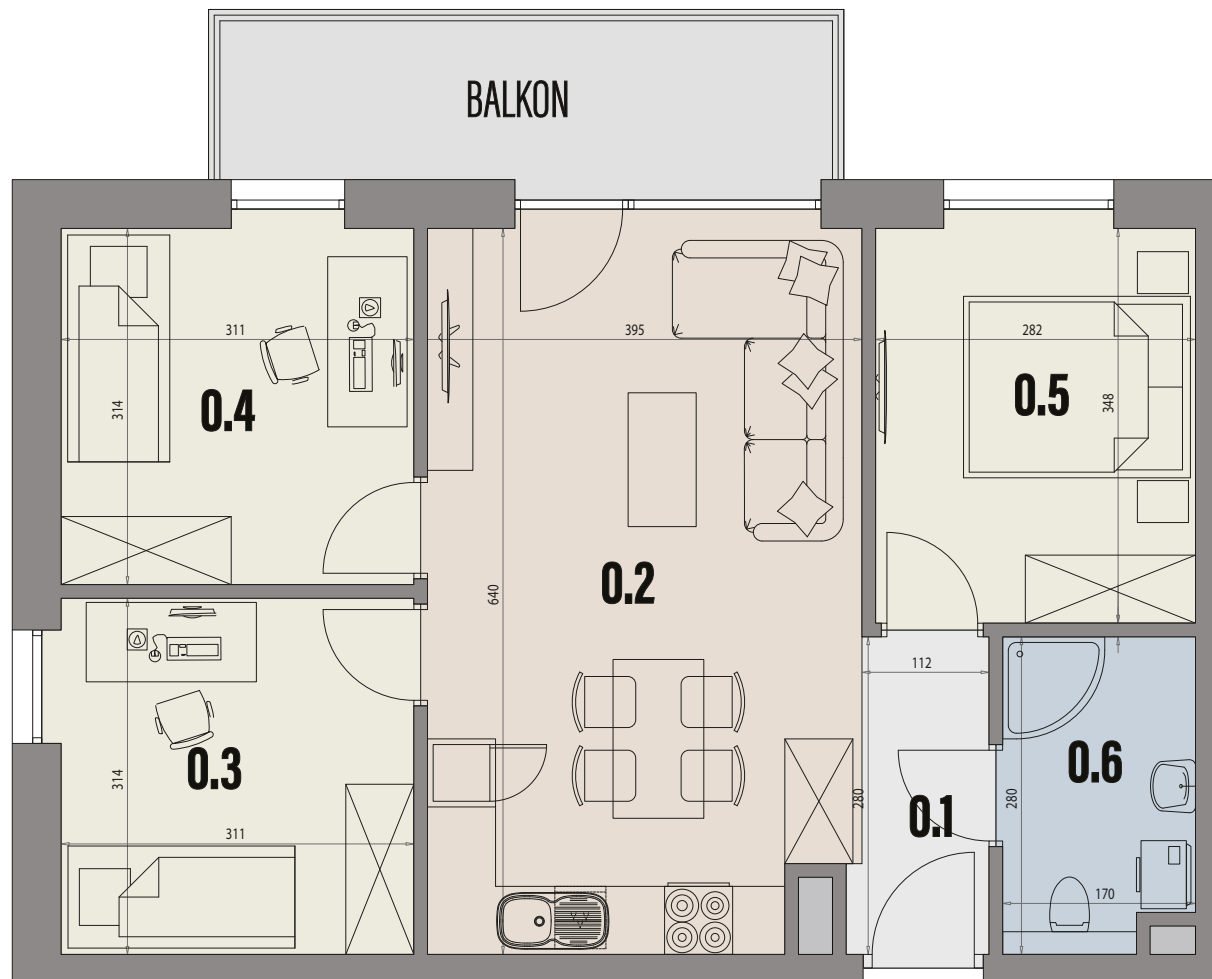
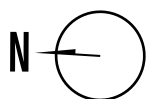
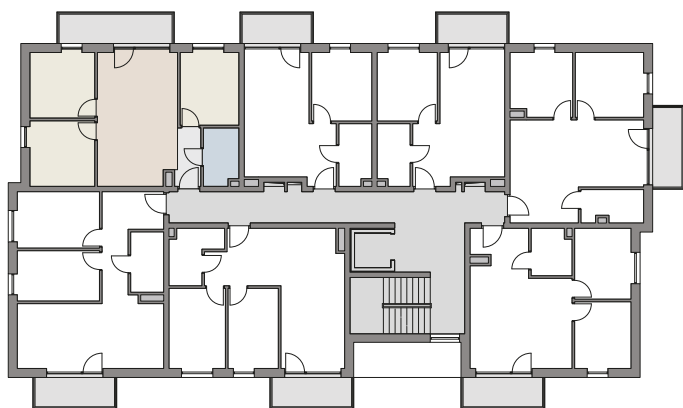
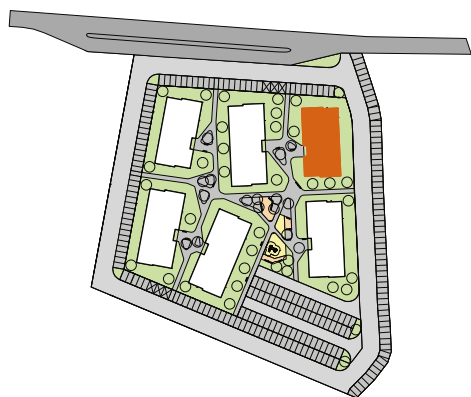
**A**  
BUDYNEK

**15**  
LOKAL

**1**  
PIĘTRO

**60,42m<sup>2</sup>**  
POWIERZCHNIA UŻYTKOWA

**8,40m<sup>2</sup>**  
POWIERZCHNIA BALKONU



|            |                       |                      |
|------------|-----------------------|----------------------|
| <b>0.1</b> | PRZEDPOKÓJ            | 3,21 m <sup>2</sup>  |
| <b>0.2</b> | SALON Z ANEKSEM KUCH. | 23,76 m <sup>2</sup> |
| <b>0.3</b> | POKÓJ                 | 9,64 m <sup>2</sup>  |
| <b>0.4</b> | POKÓJ                 | 9,64 m <sup>2</sup>  |
| <b>0.5</b> | POKÓJ                 | 9,69 m <sup>2</sup>  |
| <b>0.6</b> | ŁAZIENKA              | 4,48 m <sup>2</sup>  |

**SOHO INVESTMENTS JAROCIN sp. z o.o.**  
ul. Wrocławska 51/1, 63-200 JAROCIN

**SOHO**  
INVESTMENTS

tel. 693 145 458 | 506 110 933  
email: [biuro@sohoinvestments.pl](mailto:biuro@sohoinvestments.pl)  
[www.sohoinvestments.pl](http://www.sohoinvestments.pl)